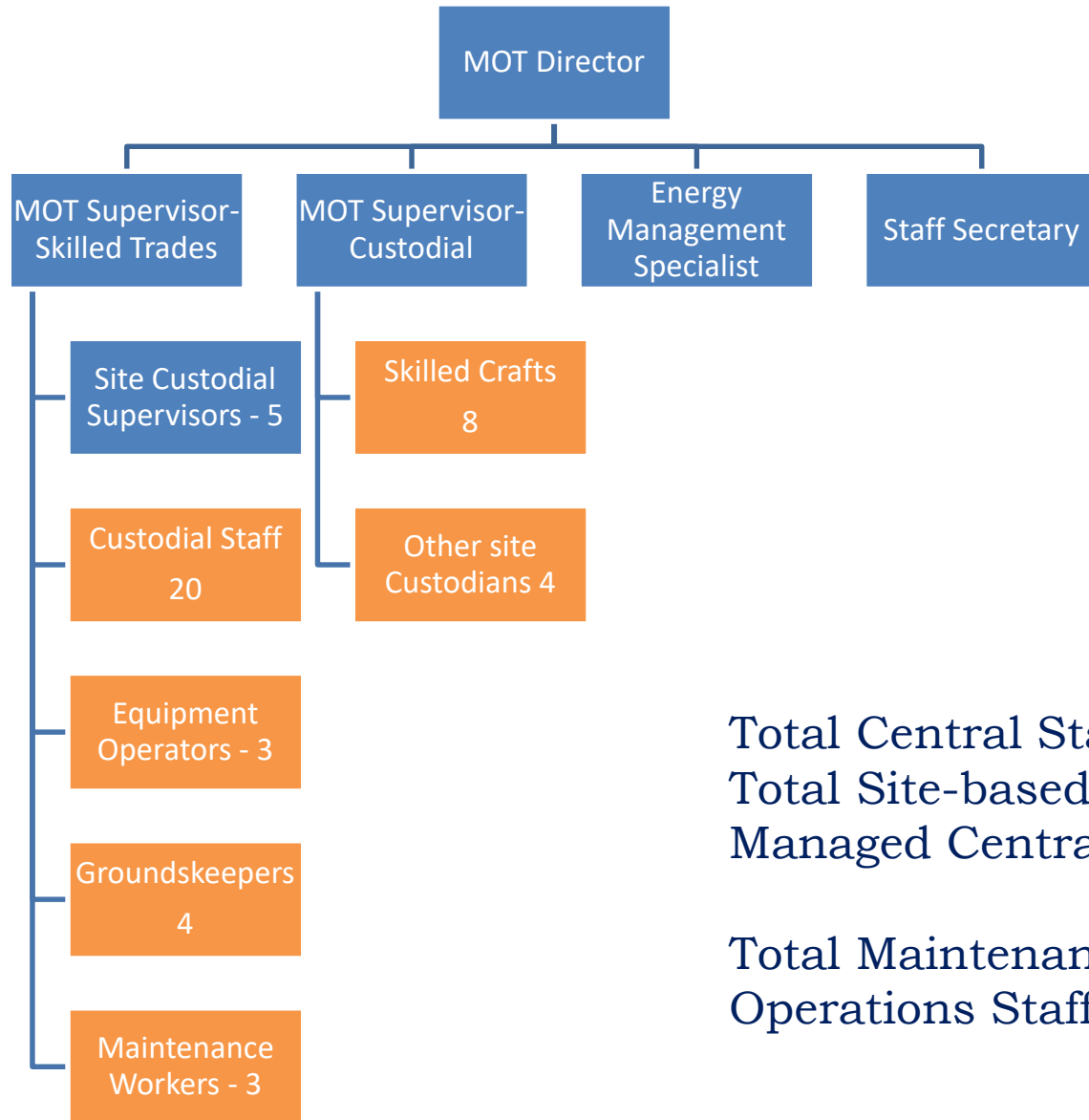




# Maintenance and Operations – Prior to Decentralization

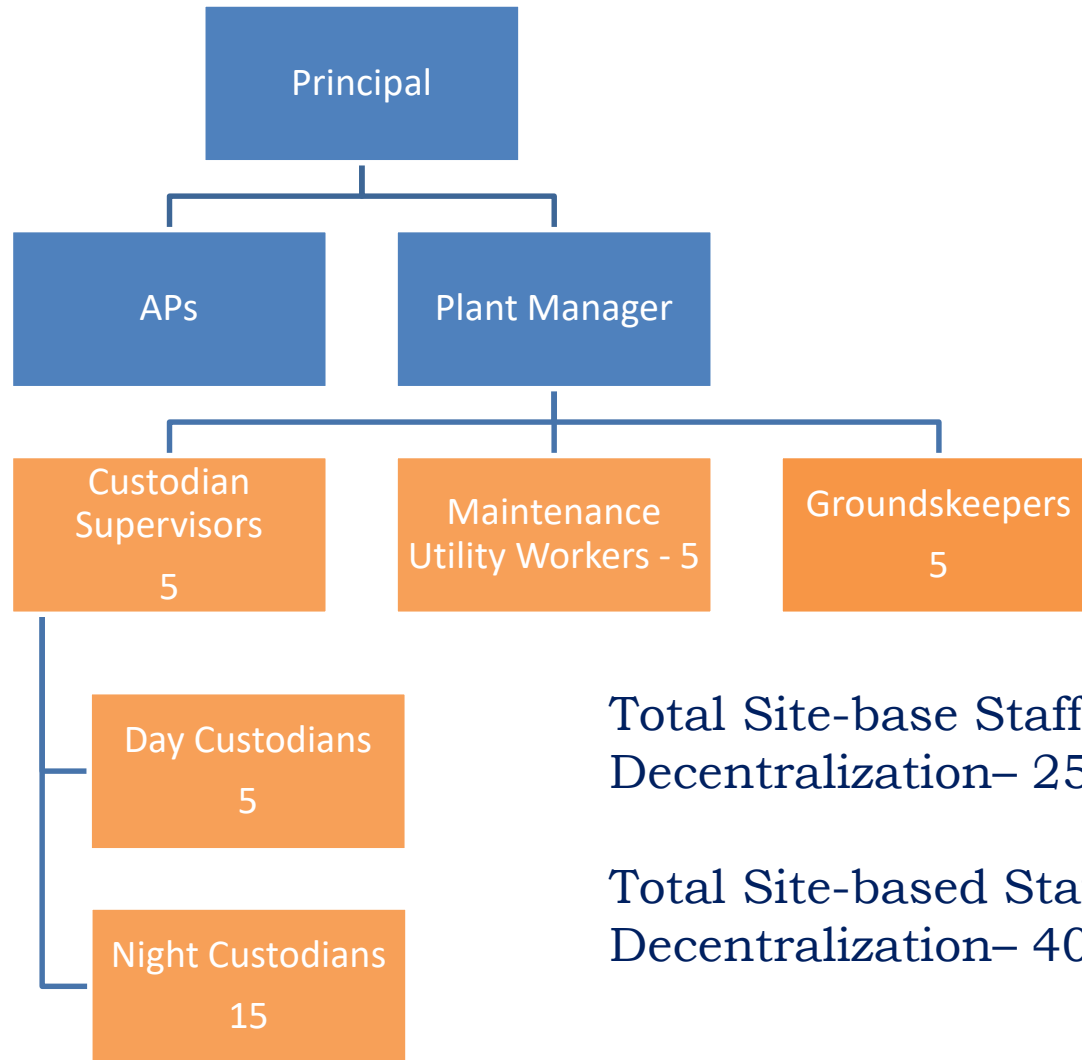


Total Central Staff – 27  
Total Site-based Staff  
Managed Centrally– 25

Total Maintenance and  
Operations Staff - 52



# Site-based Operations – Decentralized

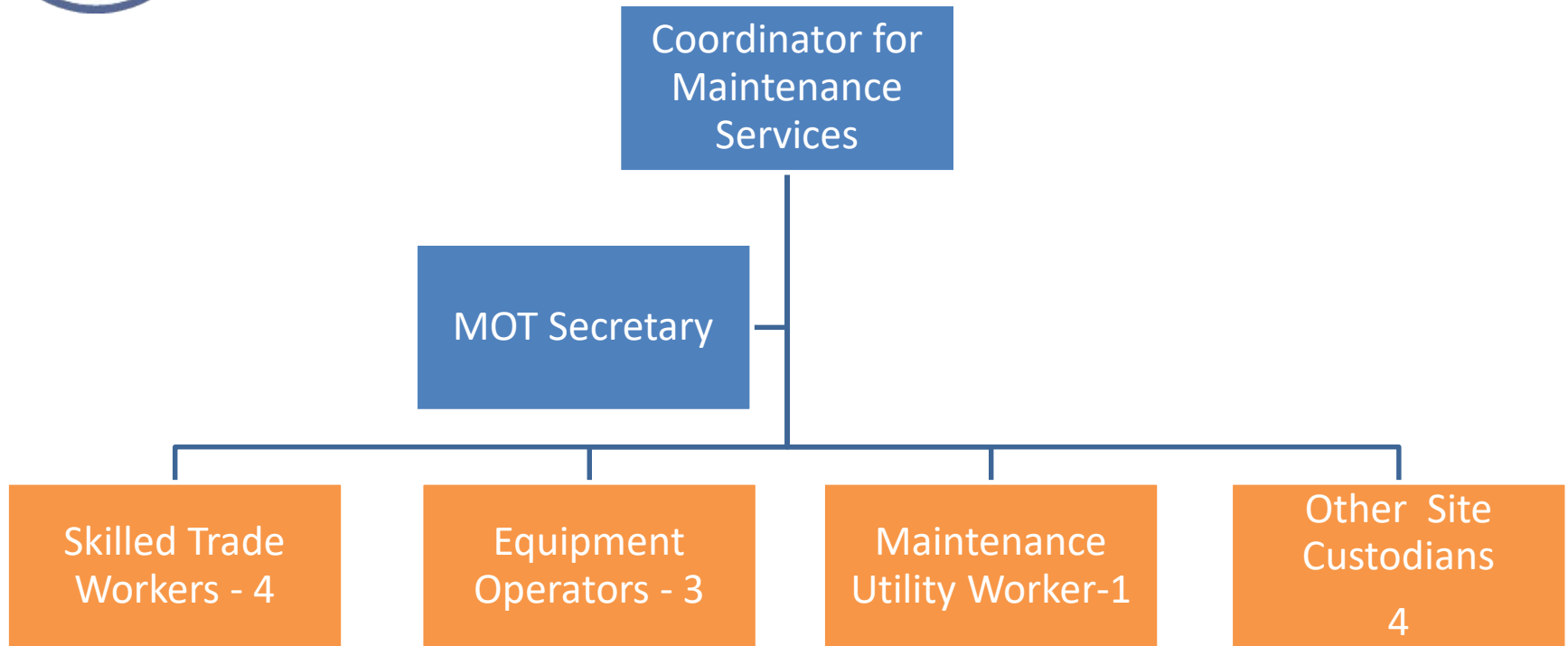


Total Site-base Staff Before Decentralization– 25

Total Site-based Staff After Decentralization– 40



## Remaining Centralized Positions Initially Proposed

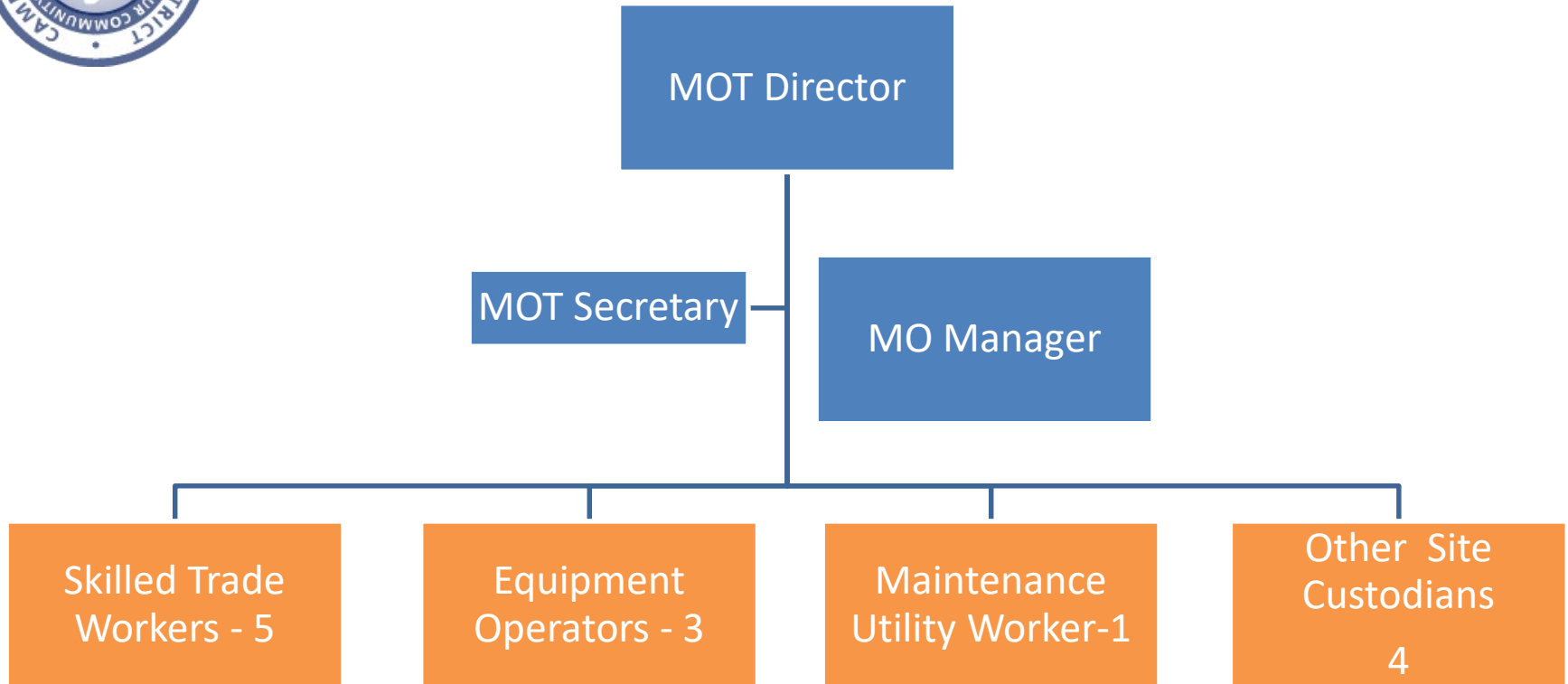


Previous Maintenance and Operations Total- 52

Proposed Maintenance and Operations Totals - 14



# Remaining Centralized Positions Current



Previous Maintenance and Operations Total- 52

Current Maintenance and Operations Totals - 16